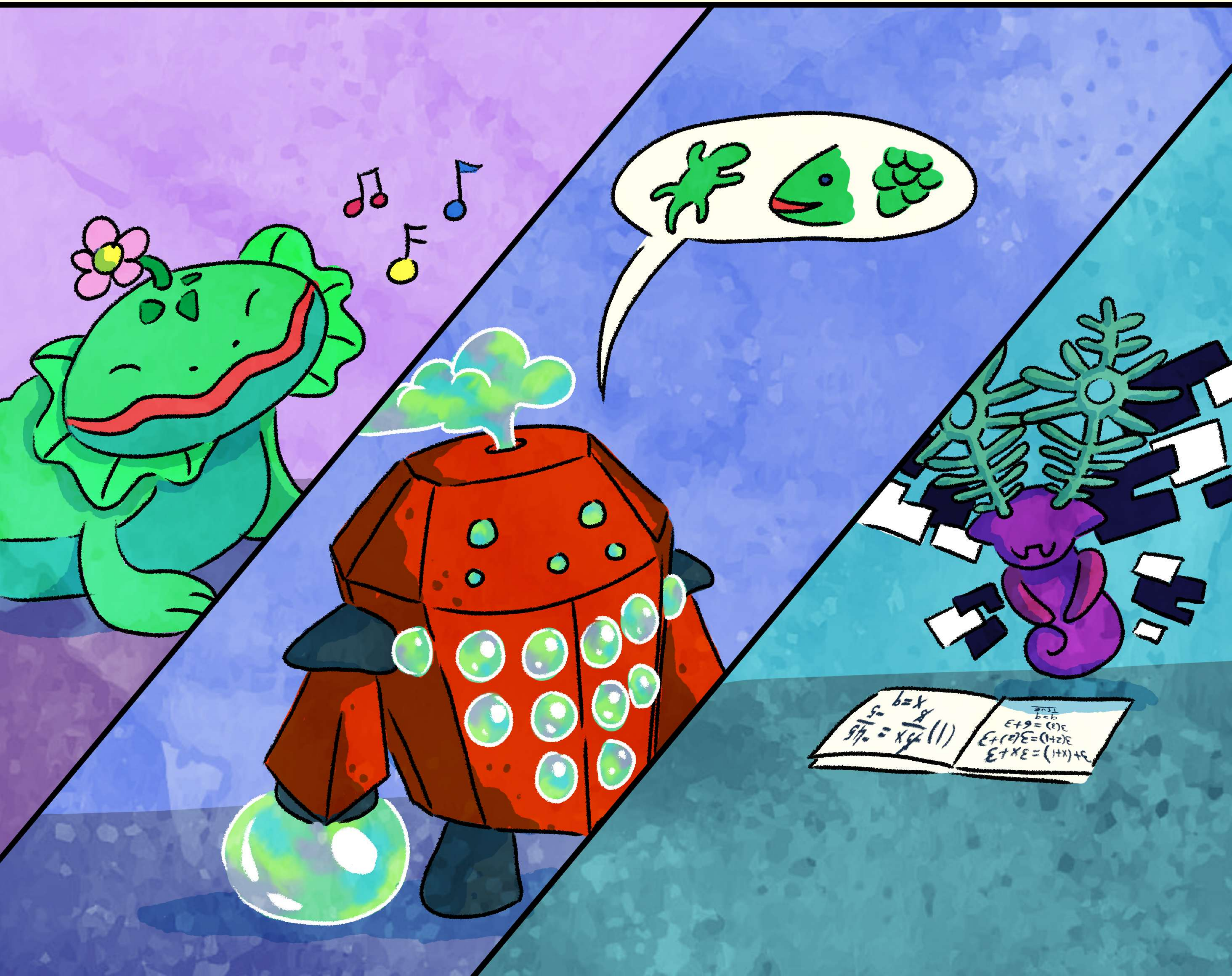


EVERYONE IS DIFFERENT, AND EVERYONE IS GOOD AT DIFFERENT THINGS. SOME OF US ARE GOOD AT SINGING, OTHERS ARE GOOD AT COLLECTING INFORMATION ABOUT OUR FAVORITE THINGS OR WORKING WITH NUMBERS.

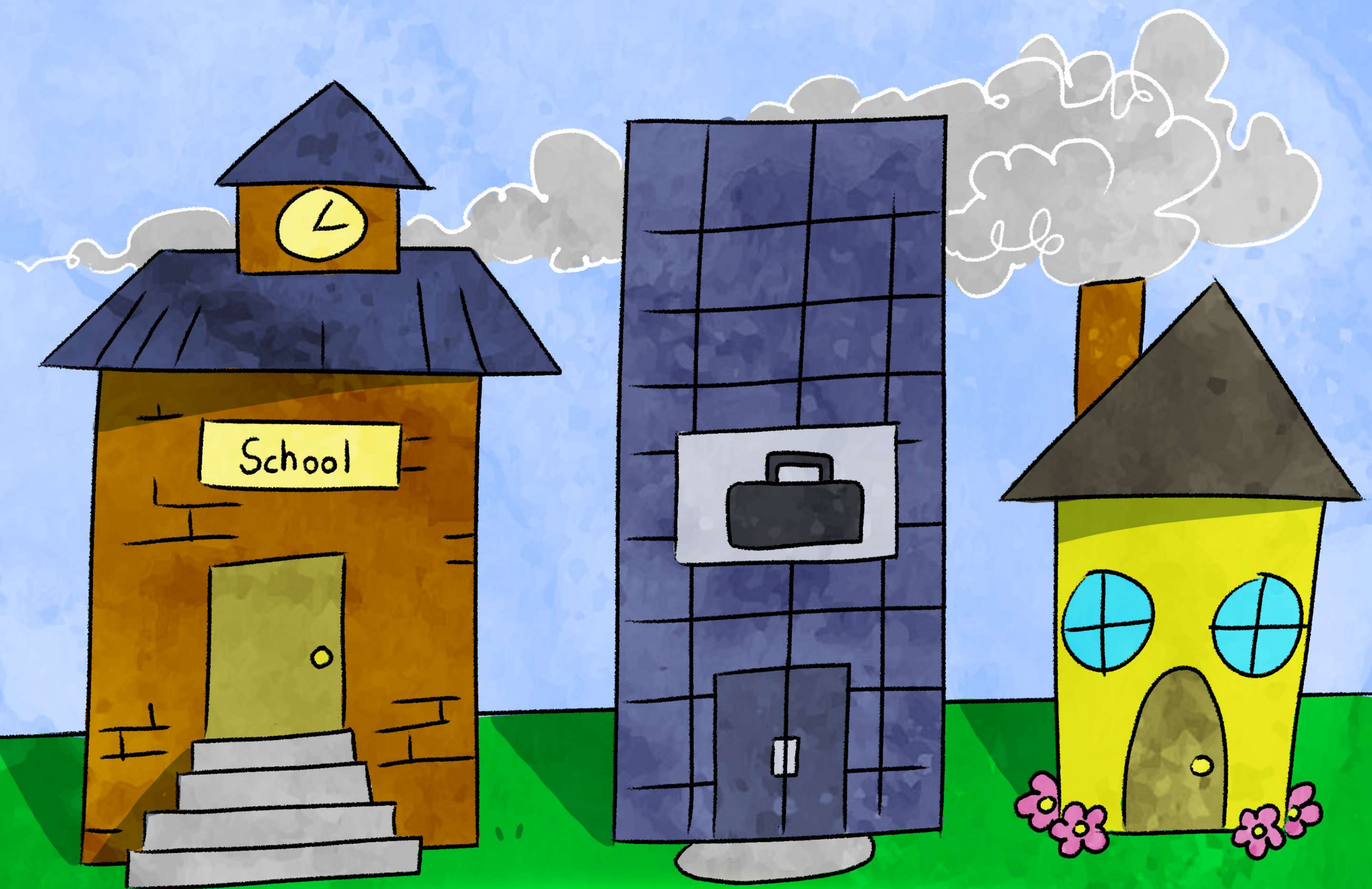


BUT WE ALSO ALL HAVE THINGS WE AREN'T AS GOOD AT.

EVEN THOUGH PRIZZIT IS GOOD WITH NUMBERS, HE IS NOT COMFORTABLE MAKING SOUND, SO HE DOESN'T SING. AND WHILE GILLY IS A GREAT SINGER, HE CAN'T RESEARCH THINGS THE WAY ROKKO CAN. ROKKO LOVES LIZARDS, AND IS GREAT AT STUDYING THEM, BUT HE DOESN'T UNDERSTAND MATH VERY WELL.

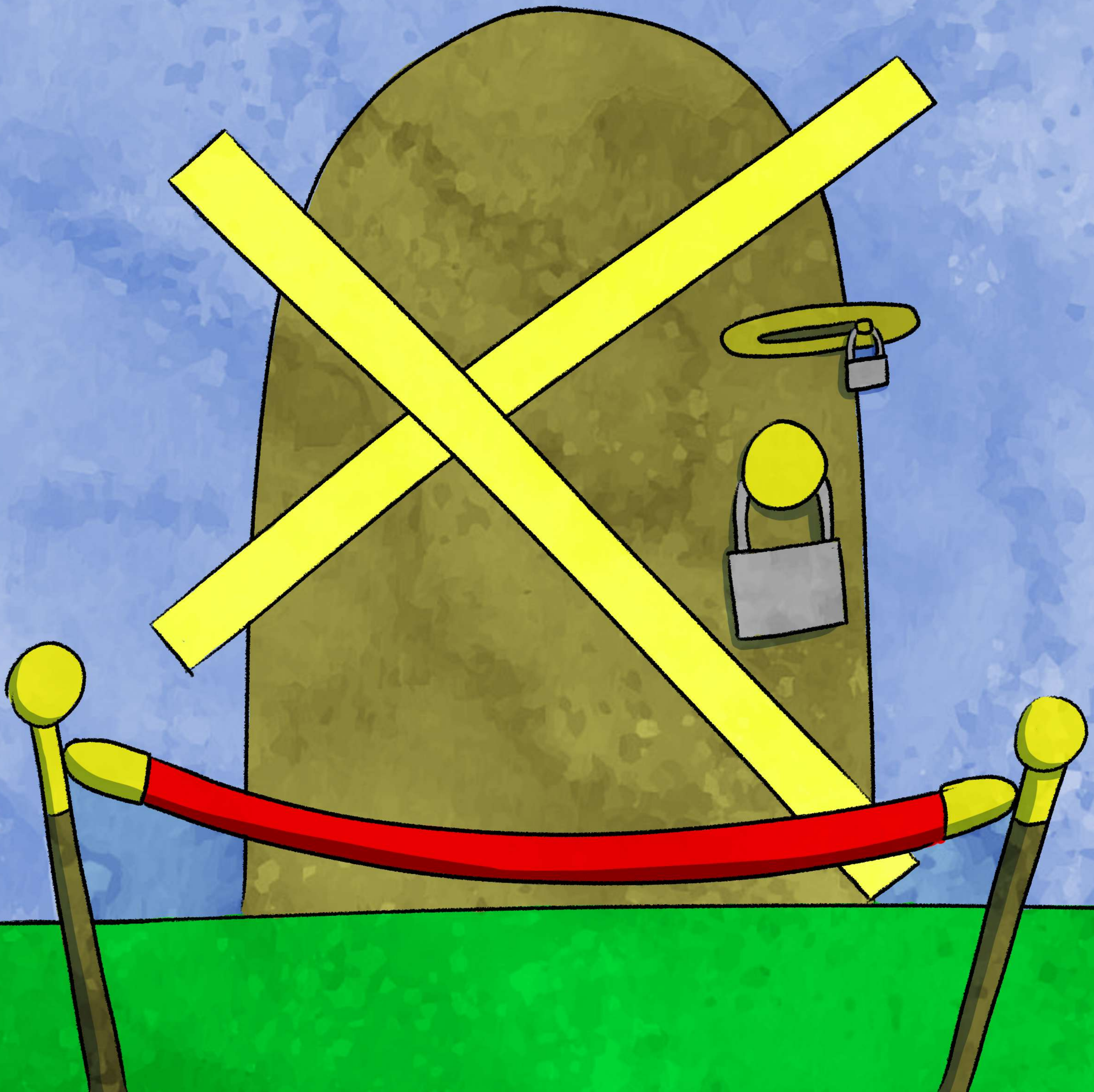


SOMETIMES, BECAUSE OF THE THINGS WE CAN'T DO AS WELL,
WE MAY NEED TO DO SOME THINGS DIFFERENTLY.



WE MAY NEED A CLASSROOM WITH SMALL CLASS SIZES OR AN AID WHO
CAN HELP US MEET OUR LEARNING GOALS. WHEN WE ARE OLDER, WE MAY NEED ADJUSTMENTS
TO OUR WORK ENVIRONMENTS SO WE ARE NOT OVERWHELMED BY SOUNDS OR HARSH LIGHTS.
AT HOME, WE MAY NEED SOMEONE TO HELP US WITH DAILY ACTIVITIES.
THIS IS CALLED SUPPORTED LIVING.

THE LACK OF ACCOMODATIONS TO LET US DO THE THINGS WE WOULD LIKE TO ARE CALLED "BARRIERS," AND COME IN A LOT OF FORMS. YOU MIGHT BE ABLE TO HAVE THE JOB YOU WANT IF SOMEONE HELPED YOU ORGANIZE YOUR TASKS, OR IF YOU HAD ACCESS TO A LESS STIMULATING ROOM TO WORK IN. IF YOU CAN'T GET THESE ACCOMODATIONS, THAT IS CONSIDERED A BARRIER.





THE IDEA THAT WE SHOULD FOCUS ON REMOVING
BARRIERS INSTEAD OF DEFICITS IS CALLED
"THE SOCIAL MODEL OF DISABILITY."

BLEE, A WATER CREATURE, CAN'T CLIMB A TREE
LIKE HER FRIEND YIN-YIN WHO IS FROM THE FOREST.
BLEE HAS HER OWN SKILLS, BUT CAN'T CLIMB
THE TREE ON HER OWN LIKE
SHE WANTS TO.

INSTEAD OF LETTING BLEE GET LEFT OUT,
YIN-YIN REMOVED THE BARRIER BY FINDING
AN ACCOMODATION TO HELP BLEE BE
INCLUDED!



YOU ARE CAPABLE OF SO MANY WONDERFUL THINGS!
NO ONE CAN DO EVERYTHING, AND THAT'S OK.
IF WE FOCUS ON ACCOMODATIONS, WE CAN DO
EVEN MORE OF THE THINGS WE ENJOY.



$$\begin{array}{r} 104 \\ \times 26 \\ \hline 2704 \end{array}$$



IF WE ALL WORK TOGETHER,
IT'S WONDERFUL HOW MUCH WE CAN DO!

