

# Weavers & Concluders

A NeuroInclusive Story  
about communication

featuring Lulu  
& Flom Flom

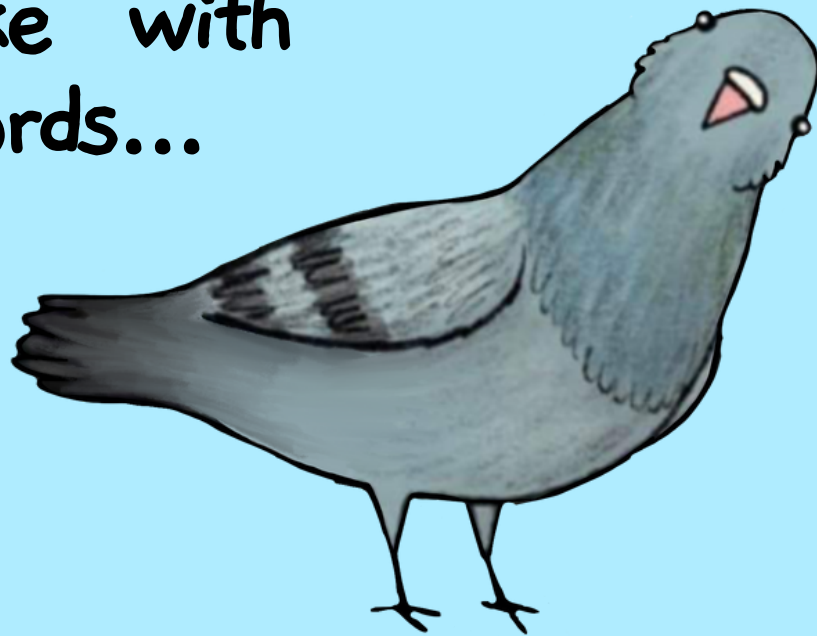
from the picture book  
Lulu is a Rhinoceros by  
Jason Flom & Allison Flom  
& illustrated by  
Sophie Corrigan



@NeuroClastic

# There are many ways to communicate

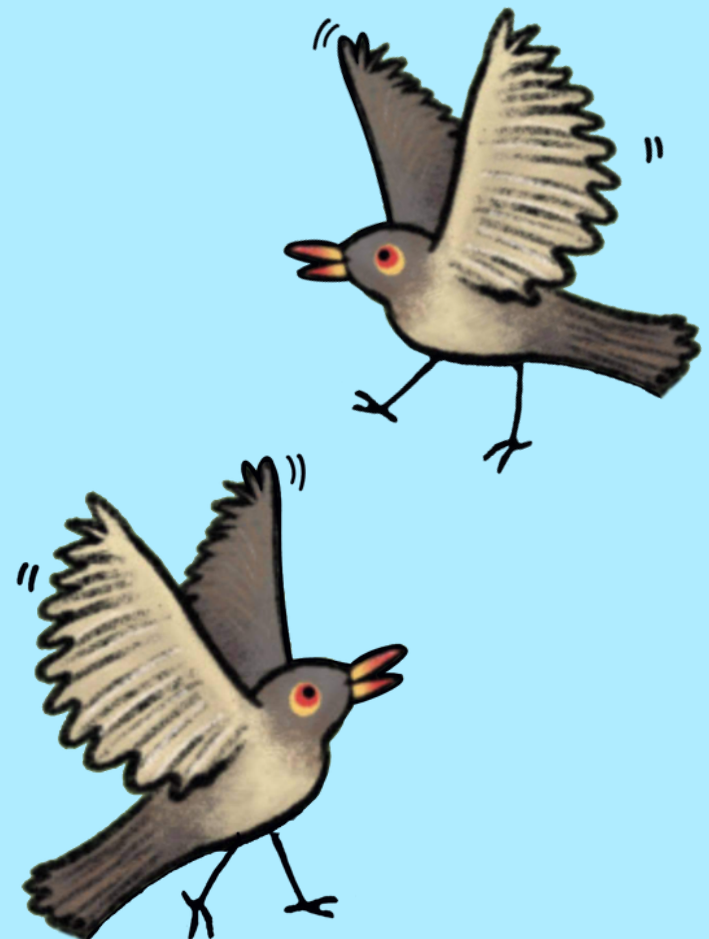
Like with  
words...



I like  
bananas.

with body language...

& with  
behaviors.





Most communicators are  
Concluders. This means  
they communicate to  
make a point.



They may  
get to their  
point by taking  
a direct approach.

Some may not get  
directly to the  
point.





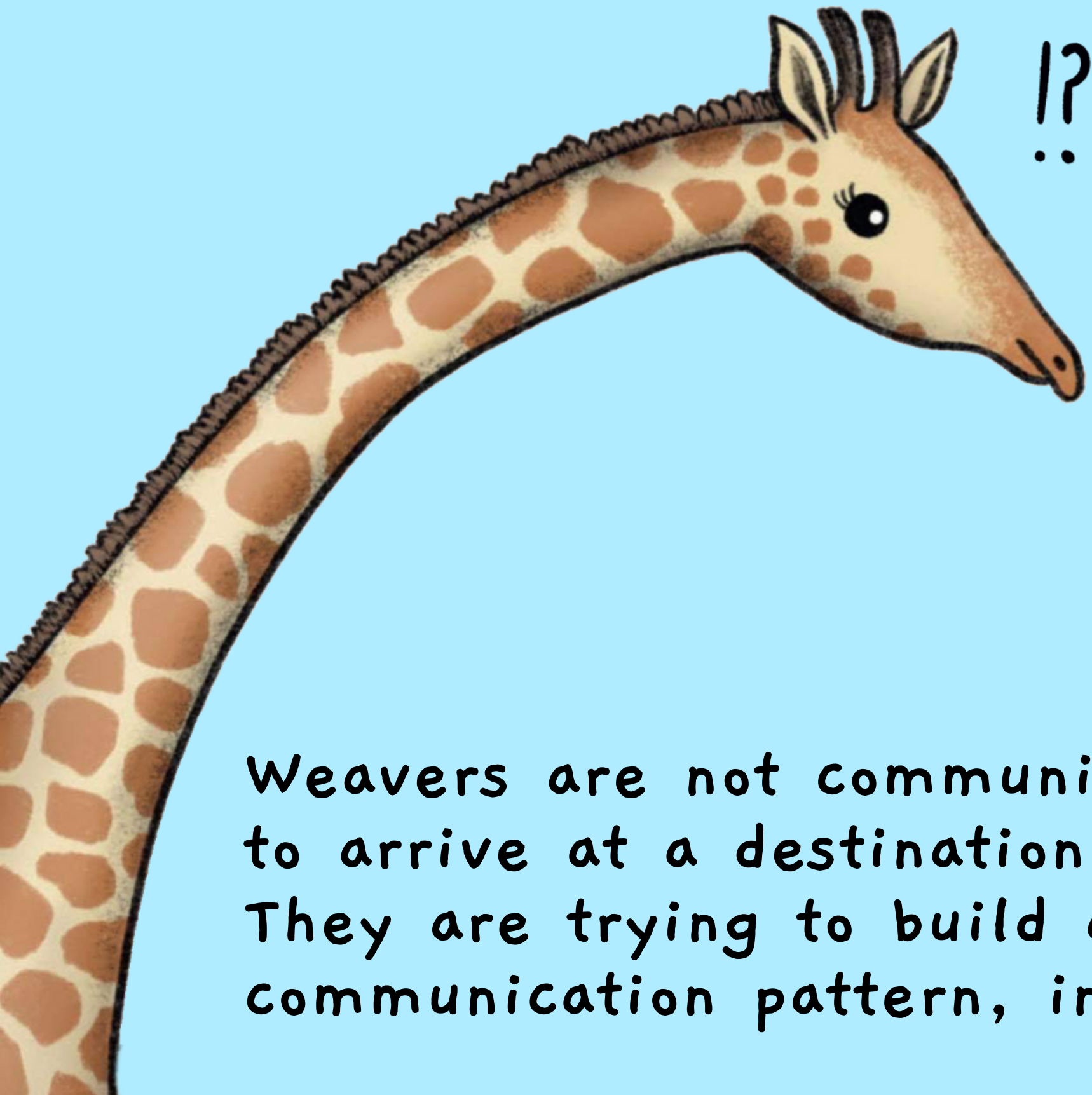
And some people can  
really go around  
the point...



They use lots  
of hints,  
details, &  
tangents.

A tangent  
is a related  
side topic.

But some communicators do not  
interact to make a point!

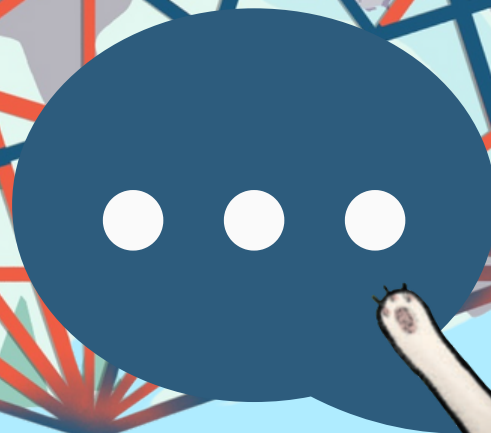


Weavers are not communicating  
to arrive at a destination.  
They are trying to build a  
communication pattern, instead.

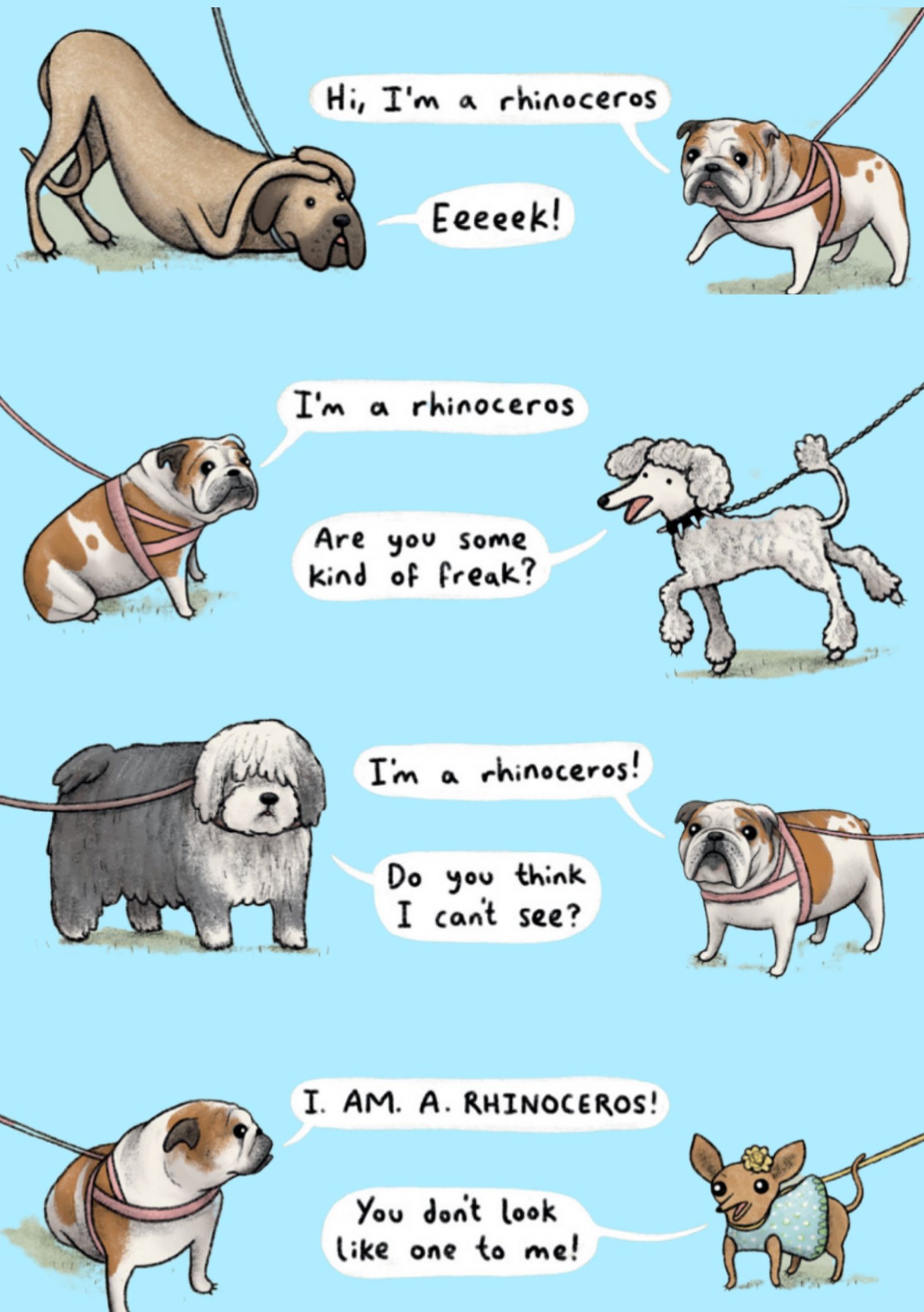




Weaver communication  
is more like this.







Lulu is a Weaver.

When she tries to communicate With Concluders, they don't know what Lulu's point could be.

Lulu says a fact, & the Concluders think she has already reached the end of the conversation.

But Weaver facts are really more like open-ended questions. Another Weaver would respond with a fact of their own.

They build common ground by building a pattern of facts.

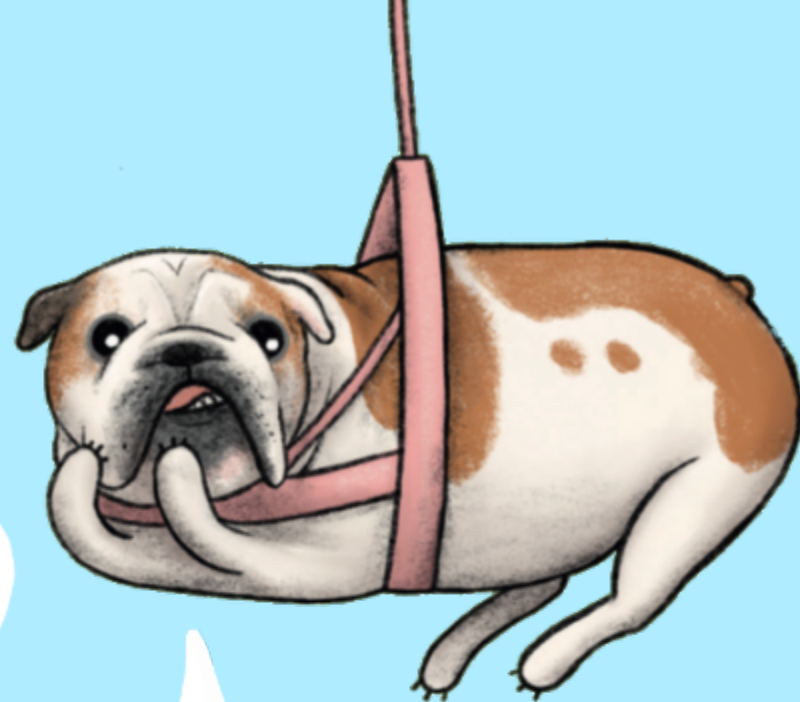


Then, Lulu finds herself in the rhino enclosure at the zoo, where she meets Flom Flom.



You're a peculiar looking rhino

Flom Flom starts communication with a fact.



Did you say "Rhino"?!  
I AM a rhino!  
How did you know?

Well, I don't have a tickbird...



Lulu and Flom Flom communicate perfectly because they are both weavers! They exchange facts until Flom Flom explains he is a tickbird. Every rhino has a tickbird and every tickbird has a rhino. Except for Flom Flom...



Well, if you need me...

And if you  
need me...

THEN WHY DONT WE...



friends

By taking turns  
stating facts and  
asking questions,  
Lulu and Flom Flom  
were able to figure  
out how, even if they  
are very different,  
they have so much to  
contribute to a  
friendship.

This is weaver  
communication.